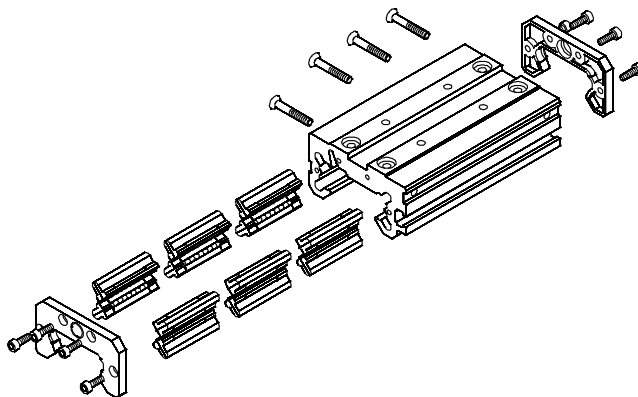


Kit opzionali / Optional kits

LPK-001

(220 g)

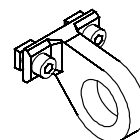
Carrello supplementare (montato da Gimatic su una guida LP)
Additional carrier (mounted on a LP guide by Gimatic)



LPK-002

(40 g)

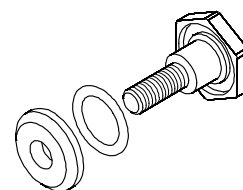
Anello per fissaggio cilindro Ø12 / Ø16
Cylinder holder Ø12 / Ø16



LPK-003

(15 g)

Giunto per stelo LinMot P01-23Sx80
Rod bolt for LinMot P01-23Sx80



LPK-004

(2 g)

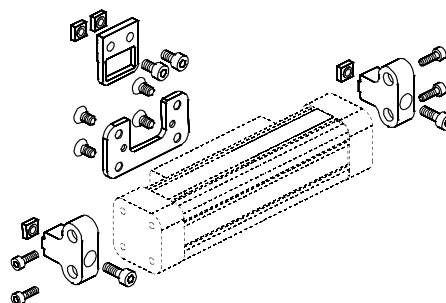
Riscontro corto per deceleratore (per LP00 e LP10)
Shock-absorber short stopper (for LP00 and LP10)



LPK-005

(65 g)

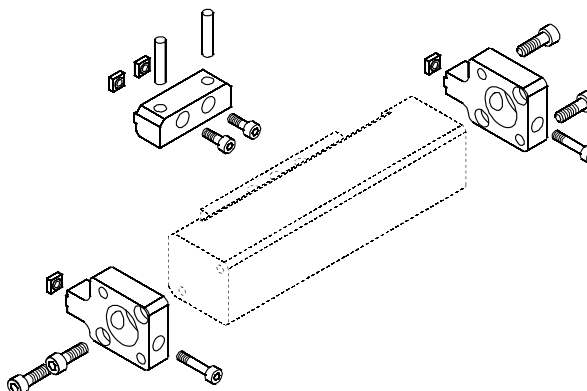
Kit fissaggio cilindro senza stelo Origa Ø16 (OSP-P16)
Fastening kit for Origa rodless cylinder Ø16 (OSP-P16)



LPK-006

(95 g)

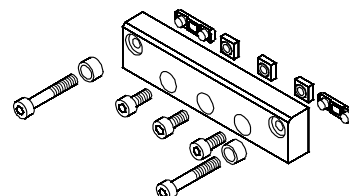
Kit fissaggio cilindro senza stelo Festo Ø18 (DGP-18)
Fastening kit for Festo rodless cylinder Ø18 (DGP-18)



LPK-012

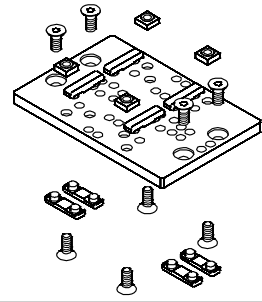
(60 g)

Kit fissaggio statore LinMot P01-23Sx80
Stator fastening kit for LinMot P01-23Sx80

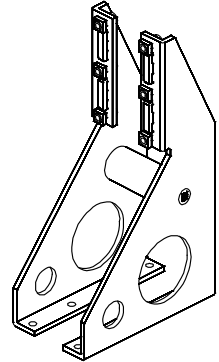


Kit opzionali / Optional kits

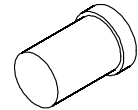
LPK-013 (75 g)
 Interfaccia di montaggio per il carrello
Mounting interface plate for the carrier



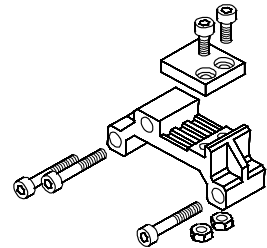
LPK-021 (530 g)
 Kit per fissaggio verticale LP02
Vertical mounting kit for LP02



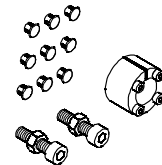
LPK-027 (4 g)
 Riscontro lungo per deceleratore (per LP01 e LP03)
Shock-absorber long stopper (for LP01 and LP03)



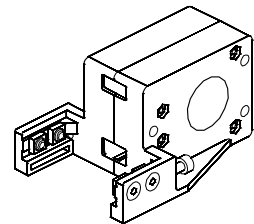
LPK-032 (40 g)
 Blocca cinghia per trasmissione a cinghia
Belt clamp for belt drive



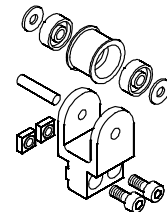
LPK-033 (25 g)
 Calettatore, tensionatore e tappi per LP07
Locking assembly, belt tensioner and plugs for LP07



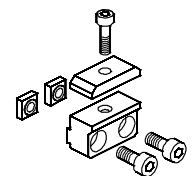
LPK-034 (370 g)
 Puleggia per trasmissione a cinghia
Pulley for belt drive



LPK-035 (30 g)
 Rinvio per autocentraggio pinza
Transmission wheel for self-centering gripper

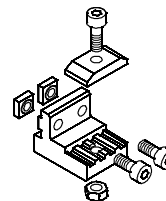


LPK-036 (15 g)
 Blocca cinghia per autocentraggio pinza
Belt clamp for self-centering gripper

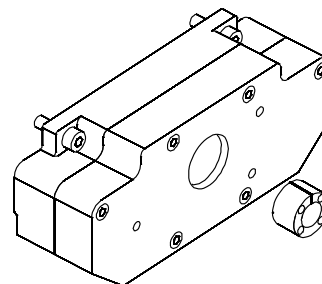


Kit opzionali / Optional kits

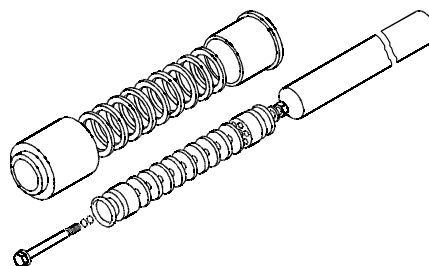
LPK-037 (35 g)
 Staffa bloccaggio cinghia dentata sistema Omega
 Clamping bracket for Omega system belt



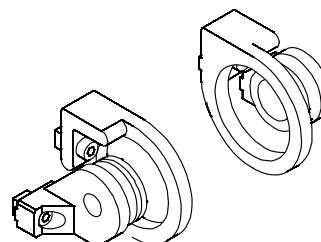
LPK-038 (530 g)
 Gruppo pulegge per trasmissione a omega
 Pulleys assembly for omega transmission



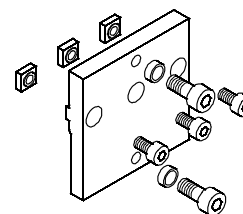
LPK-039 (300 g)
 Pistone per cilindro senza stelo a trascinamento magnetico
 Piston for magnetically coupled rodless cylinder



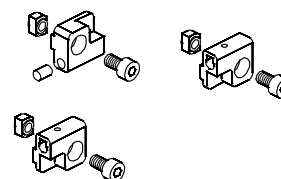
LPK-040 (210 g)
 Kit di fissaggio per cilindro senza stelo a trascinamento magnetico LPK-039
 Fastening kit for magnetically coupled rodless cylinder LPK-039



LPK-045 (50 g)
 Piastra di interfaccia per flangia LinMot PF02-23
 Interface plate for LinMot flange PF02-23



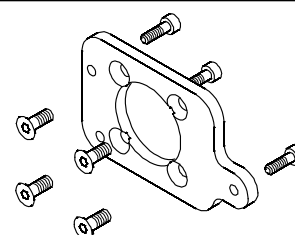
LPK-046 (10 g)
 Staffe per sensori
 Sensor brackets



LP23-67 (1 g)
 Dado ad innesto M4 per cava 5 (1 pezzo)
 M4 rhombus T-nut for slot 5 (1 piece)

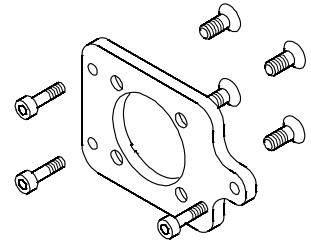


LPK-048 (60 g)
 Interfaccia per riduttore epicicloidale per alberi Ø10 (LP06)
 Adapter plate for planetary gear for shafts Ø10 (LP06)

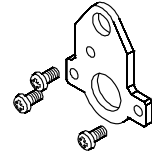


Kit opzionali / Optional kits

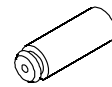
LPK-049 (50 g)
 Interfaccia per riduttore epicicloidale per alberi Ø10 (LP07)
Adapter plate for planetary gear for shafts Ø10 (LP07)



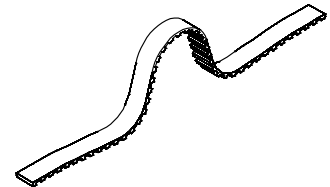
LPK-050 (25 g)
 Testata
End plate



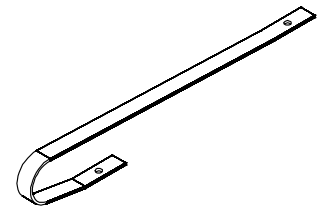
LPK-051 (6 g)
 Ammortizzatore in gomma
Rubber stopper



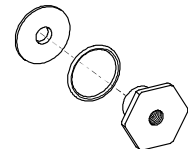
LP23-53 (21 g/m)
 Cinghia dentata per LP06 e LP07
Timing belt for LP06 and LP07



LP23-54 (20 g/m)
 Cinghia piana per LP08 e LL08
Flat belt for LP08 and LL08



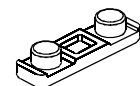
LZK-003 (23 g)
 Giunto M6 per cilindri Ø12 e Ø16 ISO 6432
Cylinder rod bolt M6 for ISO 6432 cylinders Ø12 and Ø16



MFM-058 (2 g)
 Dado (1 pezzo)
T-nut (1 piece)



MFP-A19 (4 g)
 Linguette di centraggio piatte (10 pezzi)
Flat centering feather keys (10 pieces)



TK10-4MB (16 g)
 Deceleratore idraulico (M10x1)
Shock-absorber (M10x1)

